

GR8 MULTIBOILER

SUPERIOR

COLORS: Black/Inox | White/Inox

GR8 CLASS

TECHNICAL FEATURES

- Available in automatic version (A), with volumetric dosing
- Painted ABS and stainless steel bodywork
- Stainless steel components
- Adjustable pins
- LED work surface area
- Stainless steel completely removable upper tray for cups
- Gauge for water pressure control
- Gauge for pressure control of every single boiler
- Controls Display
- Resistive button, 6 programmable doses for each group
- SMB Multi-boiler system (energy saving)
- Stainless steel service boiler with 12 litres capacity
- Stainless steel coffee boiler with 12 litres capacity with patented system temperature control STRATOS SYSTEM
- STRATOS groups
- 2 Fast steam tap levers "DRY steam system"
- 2 Stainless steel steam wands
- Water tap touch control with 2 programmable temperature
- Hot and cold water mix
- Lift-up group sand moveable lower cup tray (3 levels, height max grid/spout 150 mm)
- Ergonomic filter holders and anti-siph handles
- Electronic cup warmer
- Incorporated motor pump
- External steam dispenser (to be ordered together with the machine-available only for Superior model)

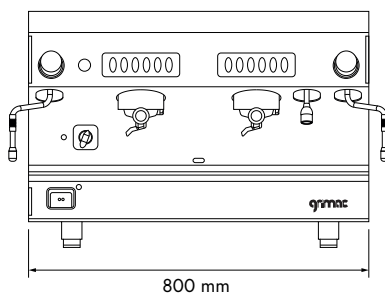
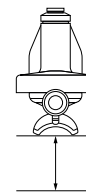


AVAILABLE VERSIONS
AUTOMATIC 2GR AND 3GR

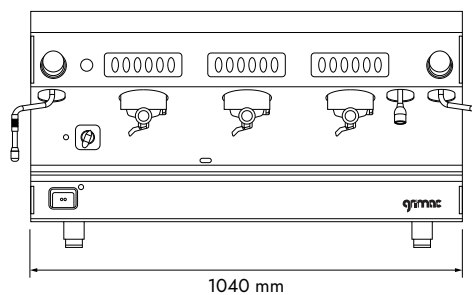
OPTIONALS
COOL TOUCH STEAM LANCE

GROUPS HEIGHT

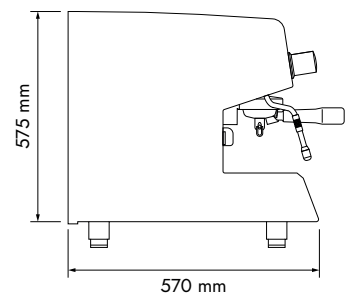
80 mm
105 mm
125 mm
150 mm



800 mm



1040 mm



575 mm

570 mm

Groups	Model	Control	Power	Resistance Boiler	Voltage	Main Boiler	Groups Boiler	Weight
2	GR8 SUPERIOR	A	5000 W	900 W	230 - 400V	12 L	1,2 L	78 kg
3	GR8 SUPERIOR	A	5900 W	900 W	230 - 400V	12 L	1,2 L	95 kg

PACKAGING (LxPxH) cm

GR8 MULTIBOILER SUPERIOR 2GR: MAX 2 MACHINES/PALLET 80x120x145 cm

GR8 MULTIBOILER SUPERIOR 3GR: MAX 2 MACHINES/PALLET 80x140x145 cm